

# English Garden- Dec BOM



## Cutting Directions:

### 4 Patch Triangle Blocks

#### Dark Pink –

Two Strips –  $2\frac{1}{2}$ " x wof

#### Dark Green –

Two Strips –  $2\frac{1}{2}$ " x wof

*Follow Shortcut Block Directions and Subcut strip set to –  $2\frac{1}{2}$ " (See: Step 3 of 4 Patch Directions)*

### 4 Patch Blocks

#### Light Pink –

One Strip –  $1\frac{3}{4}$ " x wof

#### Medium Pink –

Two Strips –  $1\frac{3}{4}$ " x wof

#### Dark Pink –

Two Strips –  $1\frac{3}{4}$ " x wof

*Follow Shortcut Block Directions and Subcut strip set to –  $1\frac{3}{4}$ " (See Step 3 of 4 Patch Directions)*

### Boston Blocks

#### Light Pink –

One Strip –  $3\frac{1}{2}$ " x wof

Subcut 2 –  $3\frac{1}{2}$ " x  $3\frac{1}{2}$ " squares

Subcut squares into = 4 triangles (8 total)

Remnant of Strip –

Subcut strip into 4 – 3" x 3" squares

Subcut squares into = 2 triangles (8 total)

#### Medium Pink –

One Strip –  $3\frac{1}{2}$ " x wof

Subcut 2 –  $3\frac{1}{2}$ " x  $3\frac{1}{2}$ " squares

Subcut squares into = 4 triangles (8 total)

Remnant of Medium Pink Strip –

Subcut strip into 4 – 3" x 3" squares

Subcut squares into = 2 triangles (8 total)

#### Dark Green –

One Strip –  $3\frac{1}{2}$ " x wof

Subcut 4 –  $3\frac{1}{2}$ " x  $3\frac{1}{2}$ " squares

Subcut squares into = 4 triangles (16 total)

**Dark Green Squares** 4 –  $2\frac{1}{2}$ " x  $2\frac{1}{2}$ "

## You will need:

2  $\frac{1}{2}$ " hard plastic template

Fabric – small to med print

Usual sewing tools

Rotary Cutter

Small to mini cutting mat

Iron

## Yardage: (wof = 20")

Light Pink - fat 8<sup>th</sup> (7" x 20")

Medium Pink - Fat 8<sup>th</sup> (7" x 20")

Dark Pink - Fat Quarter (8.5" x 20")

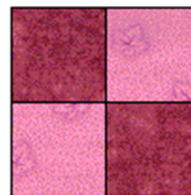
Dark Green - Fat Quarter (11" x 20")

Once you've cut all of your pieces then you need to refer to the Shortcut block directions which you can find in the files section in the Life's a Quilt FB group.

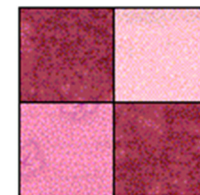
## Rhonda's 4 Patch Shortcut Blocks

## Rhonda's Boston Blocks

4 - 4 Patch squares



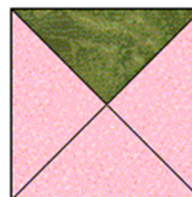
4 - 4 Patch squares (light)



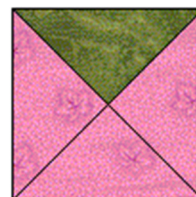
4 squares



8 - 4 Boston Blocks



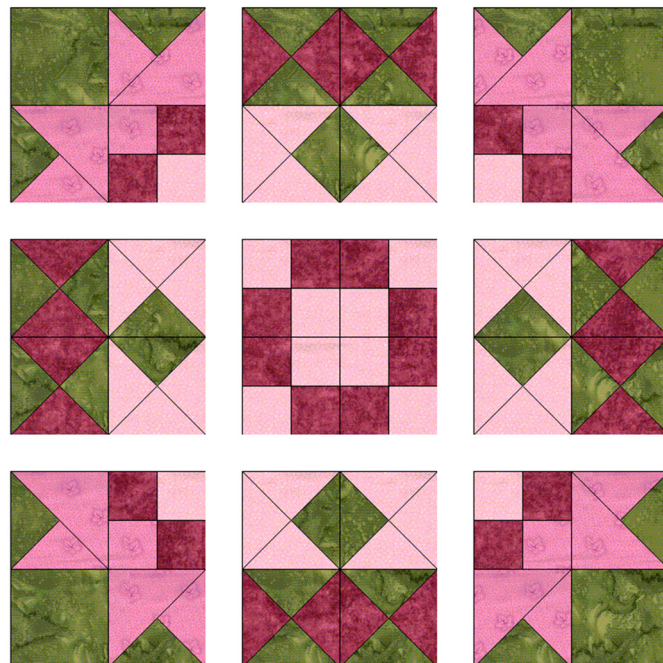
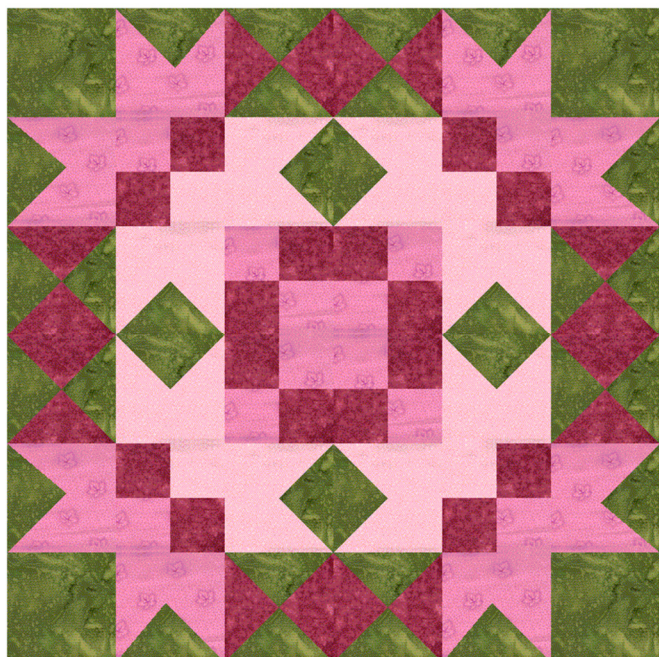
8 - 4 Boston Blocks



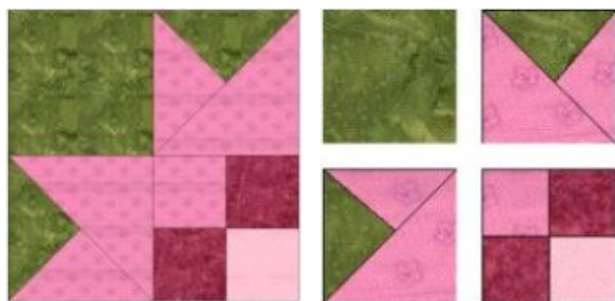
8 - 4 Patch Triangles



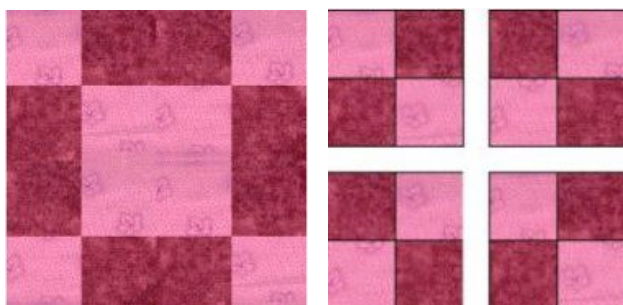
# English Garden- Dec BOM



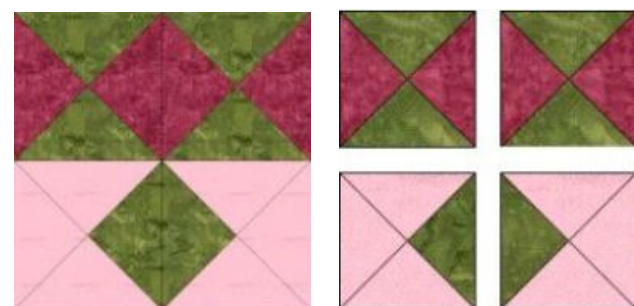
Corners



Center



Middle



Above left here you can see the BOM quilt block. On the right here is the layout showing you how all of the blocks lay in the layout.

Make sure you have all the colors in the right position and you have the blocks turned the right direction.

\*\*\*\*\*

I like to break the quilt block into 4 patches. Or you can sew the blocks into rows then sew the rows together.

1<sup>st</sup> step:

Sew all 4 of the corner 4 Patches

2<sup>nd</sup> step

Sew all 4 of the Middle 4 patches

3<sup>rd</sup> step

Sew the center 4 patch

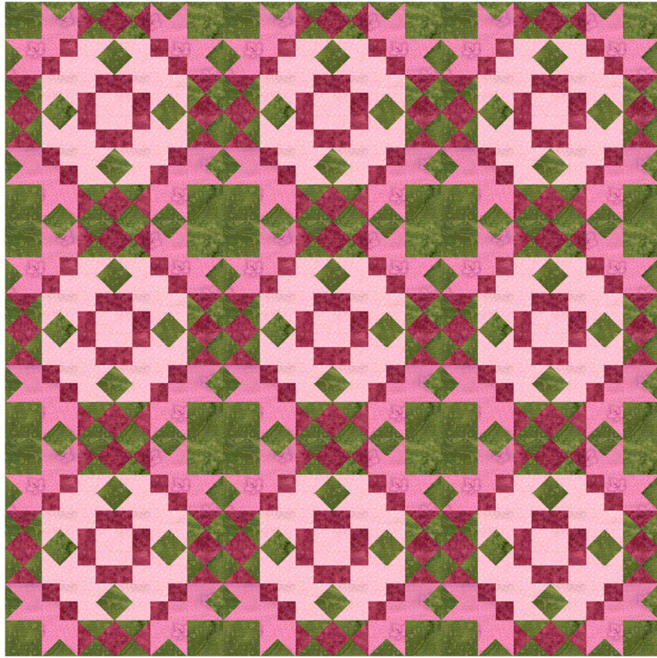
Sew all of the 4 patches into rows

According to the layout above



# English Garden- Dec BOM

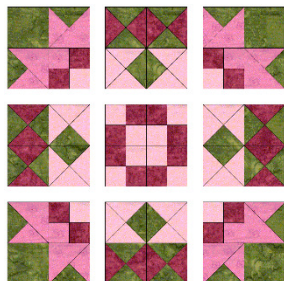
This is the original color way using the quilt block you see above.



Quilt Block



Layout



I've only changed the colors in these quilts. I did not turn any blocks or move anything around. Where you put the colors is what makes or breaks the look of the quilt. Make sure you keep the same contrast between the colors as you see in each quilt. Contrast is important to make the design stand out.

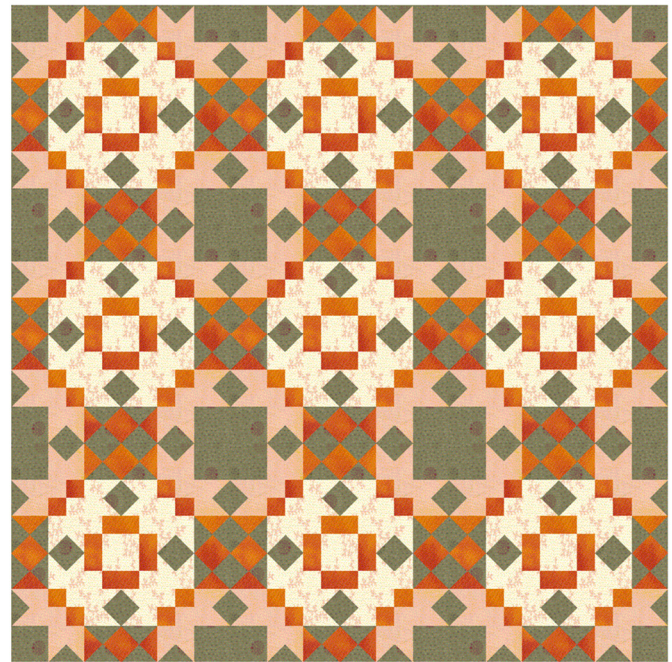
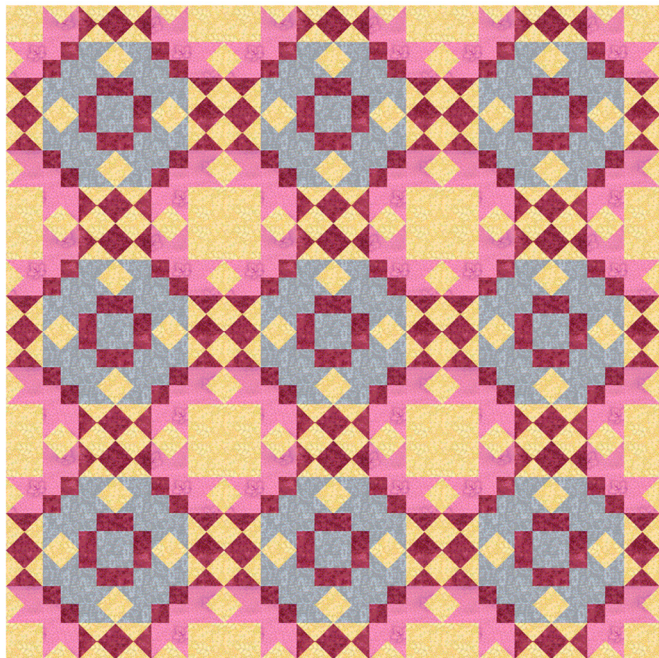
I'm not including the yardage here because if you use a different size template than the 2 1/2" template I used then your quilt will be bigger. If you use more quilt blocks than I did your quilt will be a different size also.

If you need help with yardage let me know and I will see what I can do.

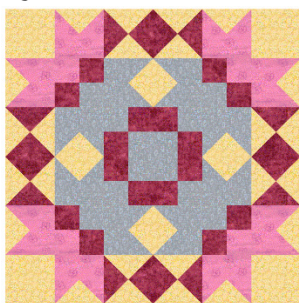


# English Garden- Dec BOM

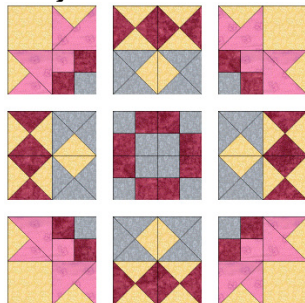
These quilt blocks are the same as the original BOM. Refer to the directions above for how to make these quilt blocks. Only the colors are changed. The process is the same as above.



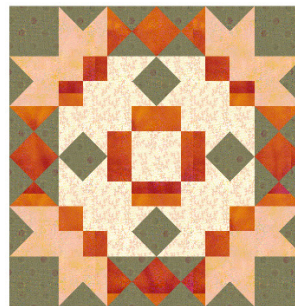
Quilt Block



Layout



Quilt Block



Layout

