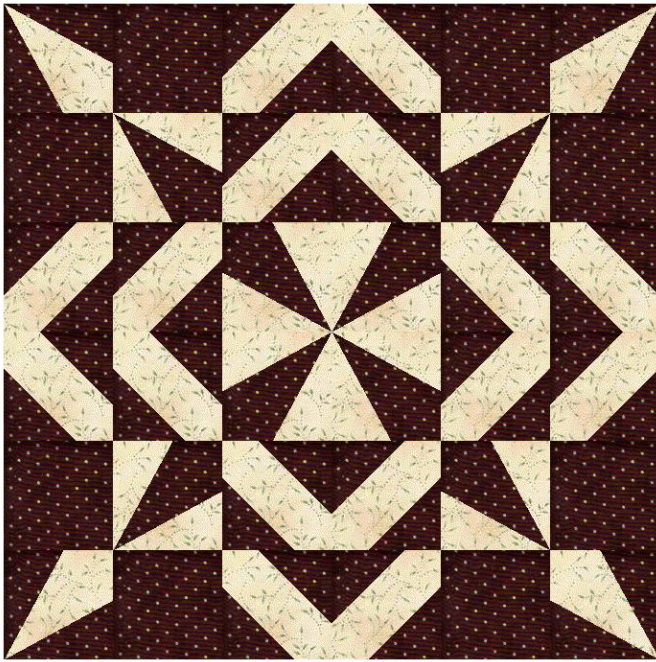


Starflake - Nov BOM



Cutting Directions:

Light –

Two Strips - $2\frac{1}{2}$ " x wof

Subcut 2 – $2\frac{1}{2}$ " x $4\frac{1}{2}$ " rectangles (for 4 SP blocks – will subcut more under the SP directions)

Subcut 8 – $2\frac{1}{2}$ " x $3\frac{3}{4}$ " rectangles (for 8 SP blocks – will subcut more under the SP directions)

Four Strips – $1\frac{1}{4}$ " x wof (for KD block)

Dark –

Three strips – $2\frac{1}{2}$ " x wof

Subcut 4 – $2\frac{1}{2}$ " x $4\frac{1}{2}$ " rectangles (for 8 SP blocks – will subcut more under the SP directions)

Subcut 4 – $2\frac{1}{2}$ " x $3\frac{3}{4}$ " rectangles (for 4 SP blocks – will subcut more under the SP directions)

Subcut 8 – $2\frac{1}{2}$ " x $2\frac{1}{2}$ " squares

Four Strips – $2\frac{1}{2}$ " x wof (for KD block)

You will need:

2 $\frac{1}{2}$ " hard plastic template
Fabric – small to med print
Usual sewing tools
Rotary Cutter
Small to mini cutting mat
Iron

Yardage:

Light - 1 Fat Quarter (11" x 20")
Dark - 1 Fat Quarter (18" x 20")

Once you've cut all of your pieces then refer to the Shortcut block directions which you can find in the files section in the Life's a Quilt FB group:

Rhonda's Kansas Dugout (KD) Shortcut Blocks

Rhonda's Star Point (SP) Shortcut Blocks

Blocks You Need to Make

Using the strips/ triangles/ squares you cut using the directions above – you will need to make

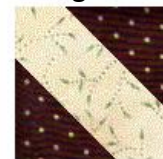
4 Star
Points



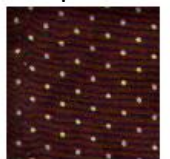
8 Star
Points



16 Kansas
Dugouts



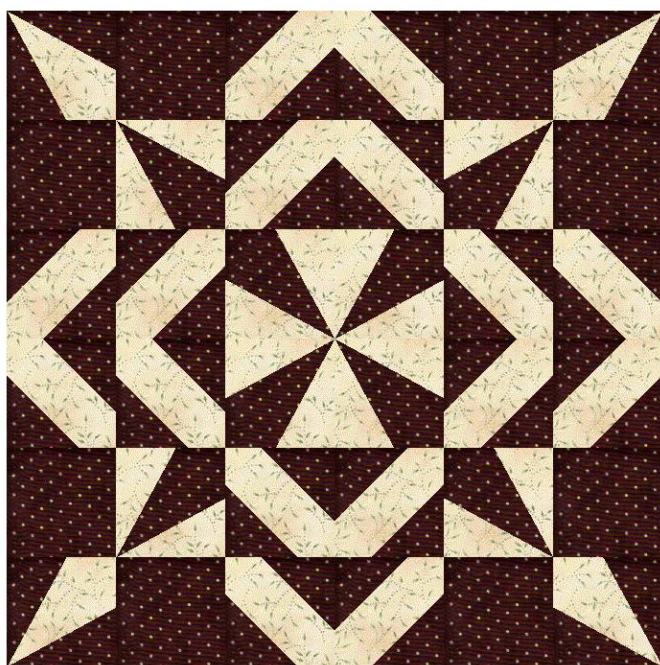
8 Squares



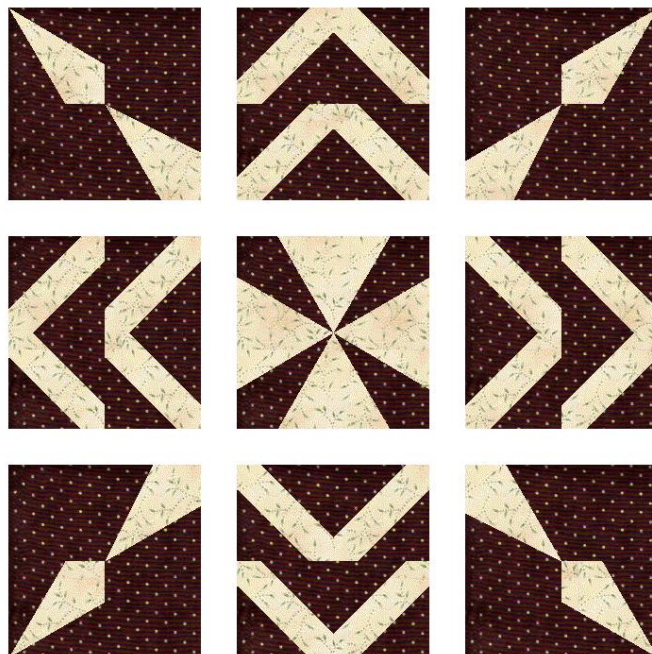
If you need any help don't hesitate to contact me by pm or email patchesbyr@yahoo.com

Thanks, Rhonda Woodsmall

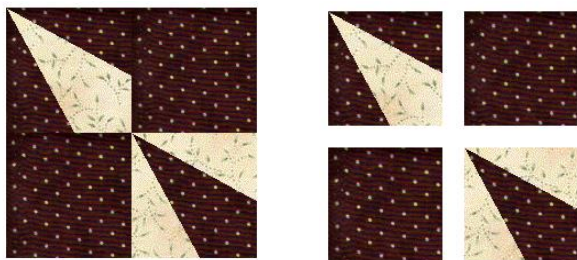
Starflake - Nov BOM



4 patch layout



Corners



Center



Middle



Above left here you can see the BOM quilt block. On the right here is the layout showing you how all of the blocks lay in the layout.

Make sure you have the colors in the right position and you have the blocks turned the right direction.

I like to break the quilt block into 4 patches. Or you can sew the blocks into rows then sew the rows together.

1st step:

Sew all 4 of the corner 4 Patches

2nd step

Sew all 4 of the middle 4 patches

3rd step

Sew the center 4 patch

Sew all of the 4 patches into rows according to the layout above

Starflake - Nov BOM

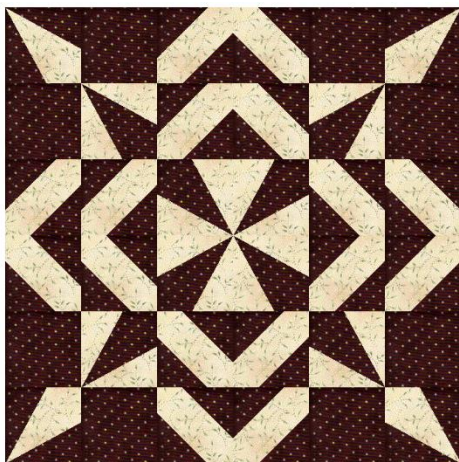
This is the original color way using the quilt block you see above.



I've only changed the colors in these quilts. I did not turn any blocks or move anything around. Where you put the colors is what makes or breaks the look of the quilt. Make sure you keep the same contrast between the colors as you see in each quilt. Contrast is important to make the design stand out.

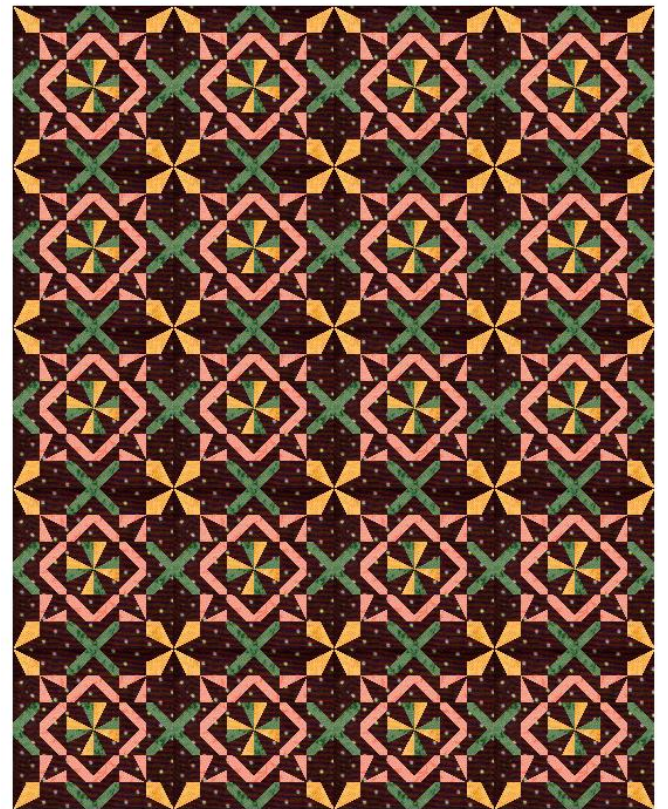
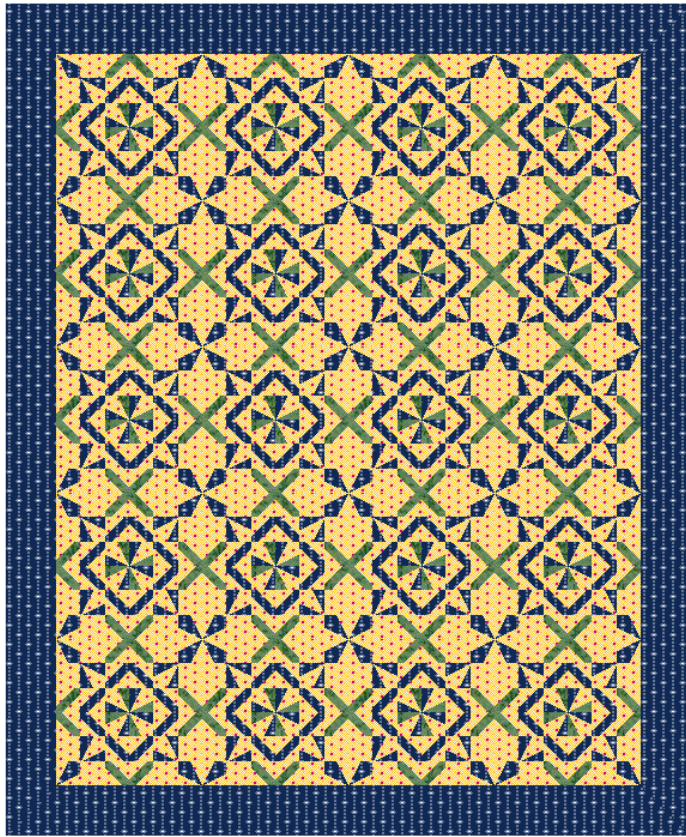
I'm not including the yardage here because if you use a different size template than the 2 ½" template I used then your quilt will be bigger. If you use more quilt blocks than I did your quilt will be a different size also.

If you need help with yardage let me know and I will see what I can do.



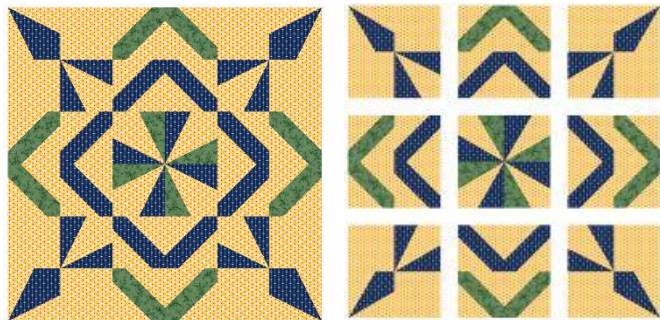
To use the quilt blocks and layouts I show with the quilt suggestions here- They are the same as the BOM layout above. I've only changed the colors. So you can make the Star Point blocks and the Kansas Dugout blocks just change the colors and sew the quilt blocks together the same way as above.

Starflake - Nov BOM



Quilt Block

Layout



Quilt Block

Layout

